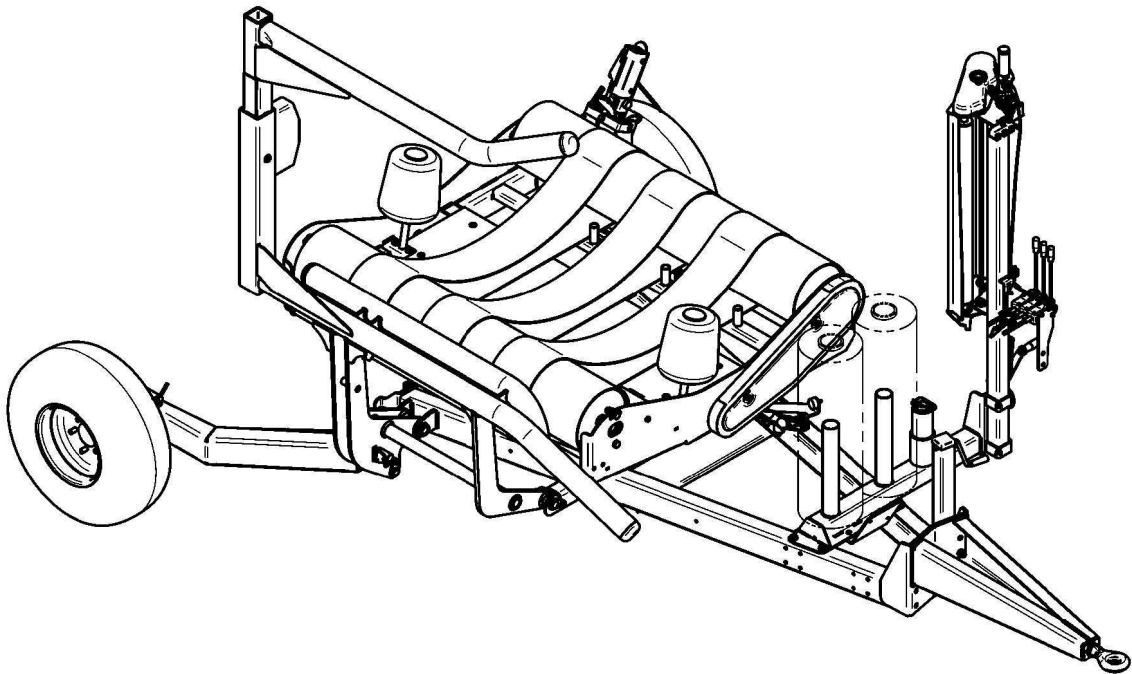


AGRICULTURAL MACHINERY

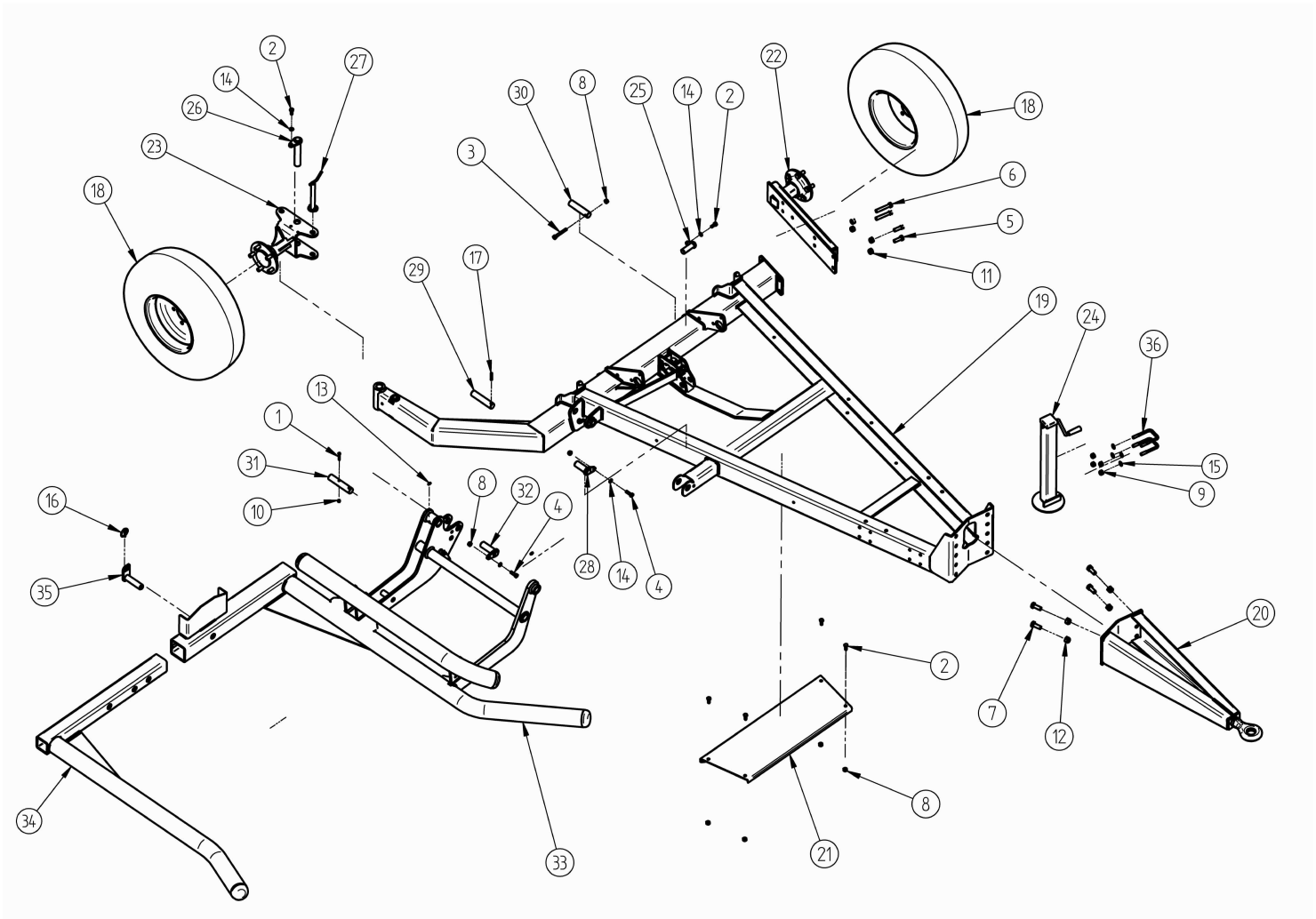
sitrex®
Spa

SPARE PARTS LIST



WR/3100

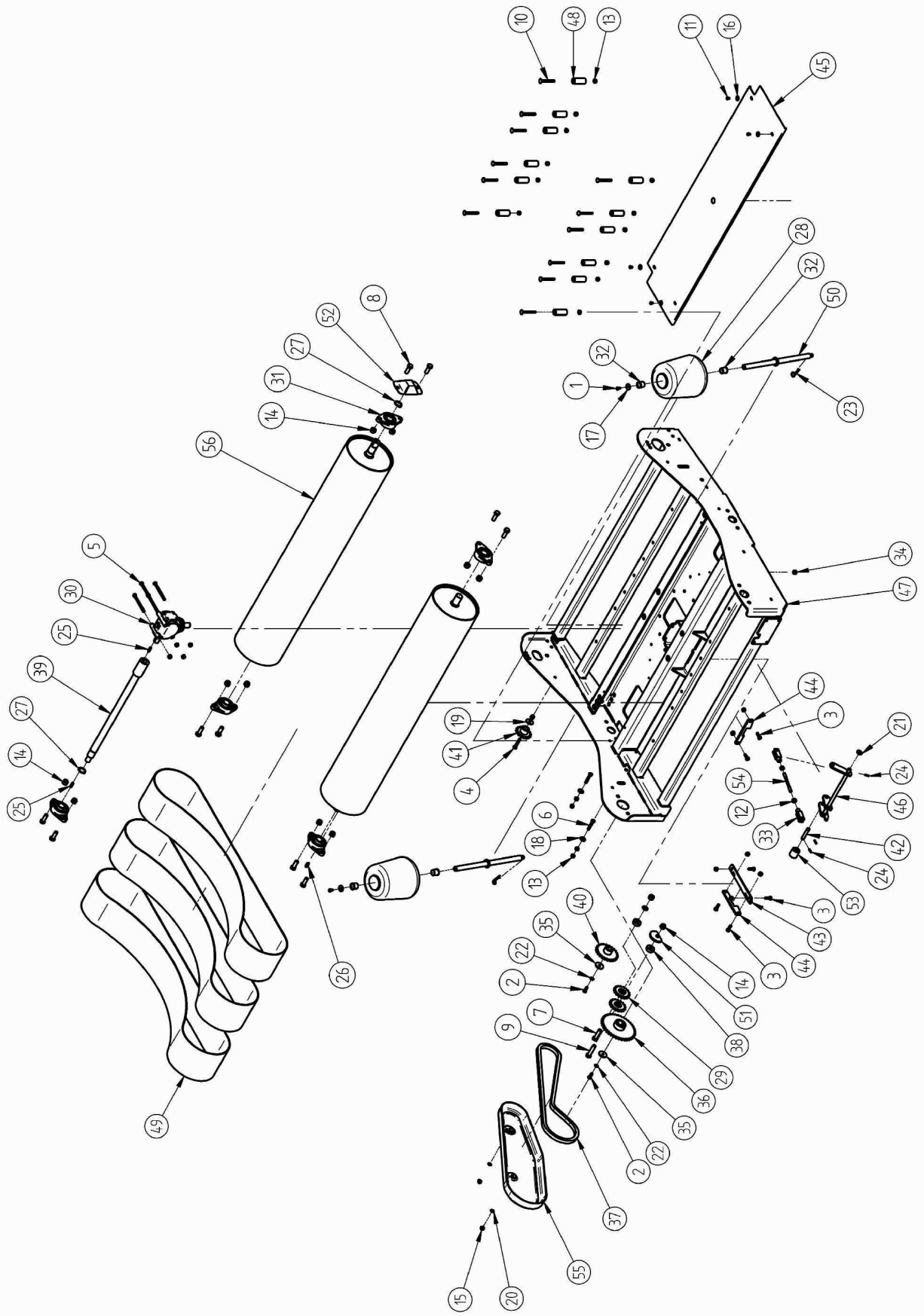
TAV. 1



TAV. 1

Pos.	Code	Q.ty	Description
1	630.103	1	SCREW M6x40 8.8 ISO 4014 ZB
2	600.006	6	SCREW M10x25 8.8 ISO 4017 ZB
3	630.110	1	SCREW M10x80 8.8 ISO 4014 ZB
4	630.014	2	SCREW M10x35 8.8 ISO 4014 ZB
5	600.310	2	SCREW M14x40 8.8 ISO 4017 ZB
6	600.736	2	SCREW M14x80 8.8 ISO 4014 ZB
7	600.035	4	SCREW M16x40 8.8 ISO 4017 ZB
8	600.554	7	SELF LOCKING NUT M10 UNI 7473 ZB
9	600.366	4	SELF LOCKING NUT M12 UNI 7473 ZB
10	630.021	1	SELF LOCKING NUT M6 UNI 7473 ZB
11	600.626	4	SELF LOCKING NUT M14 UNI 7473 ZB
12	600.197	4	SELF LOCKING NUT M16 UNI 7473 ZB
13	600.124	2	STRAIGHT GREASER M6x1
14	600.322	4	FLAT WASHER M10 ISO 7089 ZB
15	600.089	4	FLAT WASHER M12 ISO 7089 ZB
16	630.168	1	PLUG AT CLUTCH D6
17	630.171	1	ELASTIC PLUG 8x45 ISO 8752 NE
18	630.220	2	TYRE 10.0/80-12 6PR
19	240.559	1	FRAME 3100 S
20	240.560	1	DRAW BAR
21	240.561	1	COMPLEMENTARY METAL SHEET
22	240.562	1	RIGHT MOBILE HUB
23	240.563	1	MOBILE HUB
24	240.564	1	STANTING FOOT WITH LOCK
25	240.021	1	PIN CRADLE CYLINDER
26	240.565	1	PIN HUB SUPPORT
27	240.566	1	PIN FOR HUB
28	240.567	1	OUTER PIN FORK
29	240.568	1	INNER PIN FORK
30	240.569	1	PIN D30 L129 WITH HOLE
31	240.704	1	SAFETY PIN
32	240.705	1	PIN HOOKING CYLINDER
33	240.706	1	ADJUSTABLE FORK
34	240.707	1	MOBILE COMPOUND
35	240.708	1	LOCKING PIN
36	240.768	2	U-BOLT M12

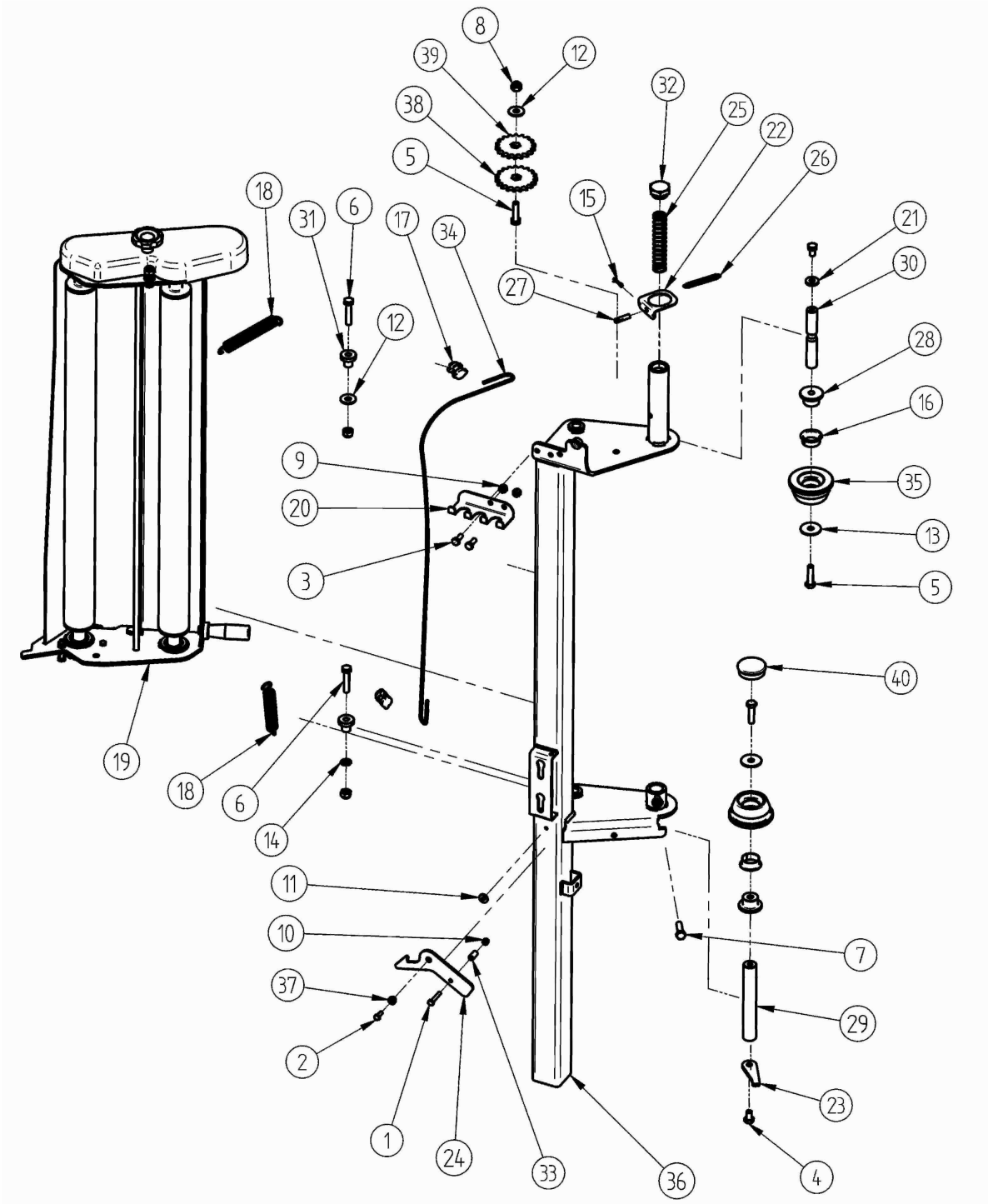
TAV. 2



TAV. 2

Pos.	Code	Q.ty	Description
1	600.061	2	SCREW M8x16 8.8 ISO 4017 ZB
2	600.006	2	SCREW M10x25 8.8 ISO 4017 ZB
3	600.148	6	SCREW M10x30 8.8 ISO 4017 ZB
4	600.696	1	SCREW M10x60 8.8 ISO 4014 ZB
5	600.206	4	SCREW M10x120 8.8 ISO 4014 ZB
6	630.112	2	SCREW M10x60 8.8 ISO 4017 ZB
7	600.174	1	SCREW M16x60 8.8 ISO 4014 ZB
8	610.167	10	SCREW M16x45 8.8 ISO 4017 ZB
9	600.292	1	SCREW M16x70 8.8 ISO 4014 ZB
10	630.133	12	SCREW TTQST M10x90 4.6 5731 ZB
11	630.141	4	SCREW TBEI M8x12 7380 AISI304
12	600.008	2	NUT M12 6S ISO 4032 ZB
13	600.554	27	SELF LOCKING NUT M10 UNI 7473 ZB
14	600.197	12	SELF LOCKING NUT M16 UNI 7473 ZB
15	630.146	2	BLIND NUT M10 ZB
16	610.185	4	WASHER M8 9x24x2 ZB
17	630.024	2	WASHER M8 9x32x2.5 ZB
18	620.250	2	WASHER M10 11x30x2.5 ZB
19	630.026	1	WASHER M10 11x40x2.5 ZB
20	600.322	2	FLAT WASHER M10 ISO 7089 ZB
21	600.031	2	FLAT WASHER M16 ISO 7089 ZB
22	630.028	2	ELASTIC CONIC WASHER 10.2x20x2.7 ZB
23	630.167	2	ELASTIC SPLIT PIN D.3,2 8833-A ZB
24	630.173	3	ELASTIC PLUG SPIRAL 6x22 ISO 8750 NE
25	630.183	3	SPLINE 8x7x32 6604/A
26	630.031	1	SPLINE 10x8x32 6604/A
27	600.333	2	OUTER SEEGER D35 UNI7435
28	240.002	2	PLASTIC ROLL FOR BALE WRAPPER
29	240.003	2	TIGHTENING CHAIN Z17 5/8"x3/8" WITH BEARING
30	240.214	1	GEAR BOX 1018190F202
31	630.229	5	SUPPORT UCFL207
32	240.007	4	BUSHING TECNOPLAST TC01040
33	630.238	2	FORK M12x48 UNI1676 C/CLIPS
34	240.015	1	MAGNET
35	240.620	2	ROLL WASHER
36	240.621	1	CROWN Z38 5/8"x3/8" DIN8187
37	240.622	1	CHAIN 5/8"x3/8" 110 PITCHES (L=1746)
38	240.623	2	BUSHING D16-41 L15
39	240.624	1	CENTRAL SHAFT
40	240.625	1	PINION Z24 5/8"x3/8" DIN8187
41	240.626	1	PINION Z16 5/8"x3/8" DIN8187
42	240.645	1	IDLE SHAFT
43	240.646	1	CATCH LOADING CRADLE
44	240.647	2	PLATE CRADLE CLUTCH
45	240.648	1	CRADLE CARTER
46	240.649	1	COMPLEMENTARY LEVERAGE
47	240.650	1	CRADLE
48	240.651	12	BELTS SPACER
49	240.652	3	BELT FOR CRADLE
50	240.653	2	ROLL SUPPORT
51	240.654	1	TIGHTENING CHAIN PLATE
52	240.655	1	COVER ROLL SHAFT
53	240.659	1	ROLL FOR LEVERAGE
54	240.660	1	BAR M12
55	240.661	1	CARTER FOR CRADLE
56	240.676	2	ROLL FOR CRADLE

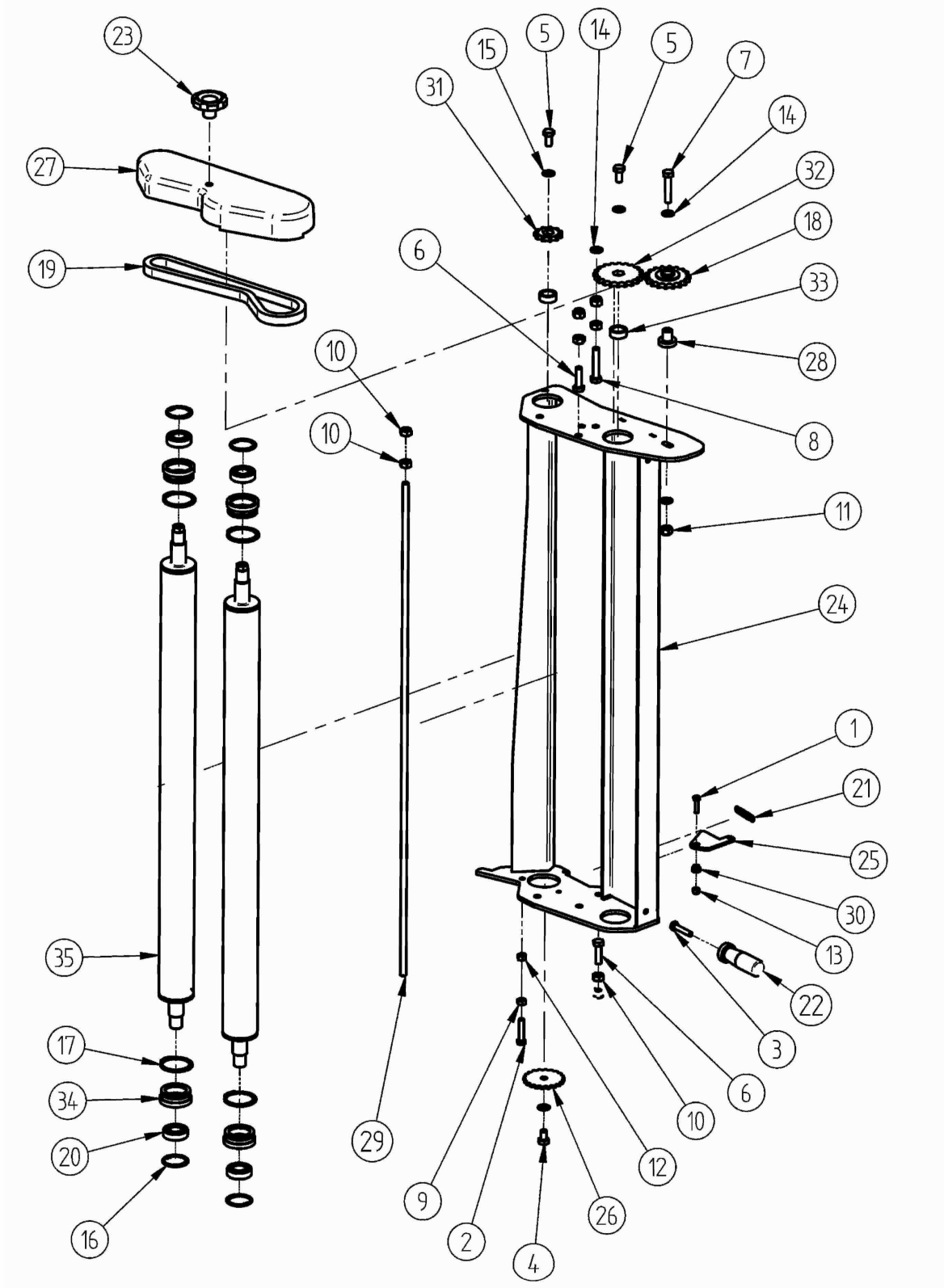
TAV. 3



TAV. 3

Pos.	Code	Q.ty	Description
1	610.803	1	SCREW M6x35 8.8 ISO 4014 ZB
2	630.104	1	SCREW M6x16 8.8 ISO 4017 ZB
3	600.223	2	SCREW M8x20 8.8 ISO 4017 ZB
4	610.843	2	SCREW M10x16 8.8 ISO 4017 ZB
5	600.350	3	SCREW M10x40 8.8 ISO 4017 ZB
6	600.404	2	SCREW M10x50 8.8 ISO 4014 ZB
7	630.014	1	SCREW M10x35 8.8 ISO 4014 ZB
8	600.554	3	SELF LOCKING NUT M10 UNI 7473 ZB
9	610.454	2	SELF LOCKING NUT M8 UNI 7473 ZB
10	630.021	1	SELF LOCKING NUT M6 UNI 7473 ZB
11	600.412	1	WASHER M6 6.6x18x2 ZB
12	620.250	2	WASHER M10 11x30x2.5 ZB
13	630.026	2	WASHER M10 11x40x2.5 ZB
14	600.322	1	FLAT WASHER M10 ISO 7089 ZB
15	600.743	1	SPLIT PIN D3.2x20 ZB 1336
16	240.009	2	COUPLING FLANGE BUSHING 3015-42T
17	240.254	2	LOCK NYLON ROPE
18	240.020	2	TRACTION SPRING 3.2x21x160
19	240.601	1	ROLLS SUPPORT
20	240.602	1	SUPPORT HYDRAULIC PIPES
21	630.058	1	WASHER M10 10.2x25x4
22	240.603	1	PLATE FOR LOCKING PIN
23	240.604	1	LEVER FOR LOWER PAD
24	240.605	1	HOOKING ROLLS SUPPORT
25	240.026	1	COMPRESSION SPRING 2x25x130
26	240.027	1	TRACTION SPRING 0.8x8.8x80
27	240.609	1	PIN LOCK UPPER PAD
28	240.029	2	PIN FOR COUPLING FLANGE BUSHING
29	240.610	1	PIN LOWER PAD
30	240.030	1	PIN UPPER PAD
31	240.031	2	PIN D16
32	630.059	1	PLUG FOR SPRING
33	240.032	1	PIN D10 L=20
34	240.612	1	COVERED CABLE L=1100
35	240.034	2	PAD REEL SUPPORT
36	240.613	1	WELDED REEL SUPPORT
37	240.043	1	PIN D10-14
38	240.133	1	PINION 1/2"x5/16" Z19 DIN 8187
39	240.134	1	PINION 1/2"x5/16" Z18 DIN 8187
40	630.077	1	PLUG PL D50

TAV. 4



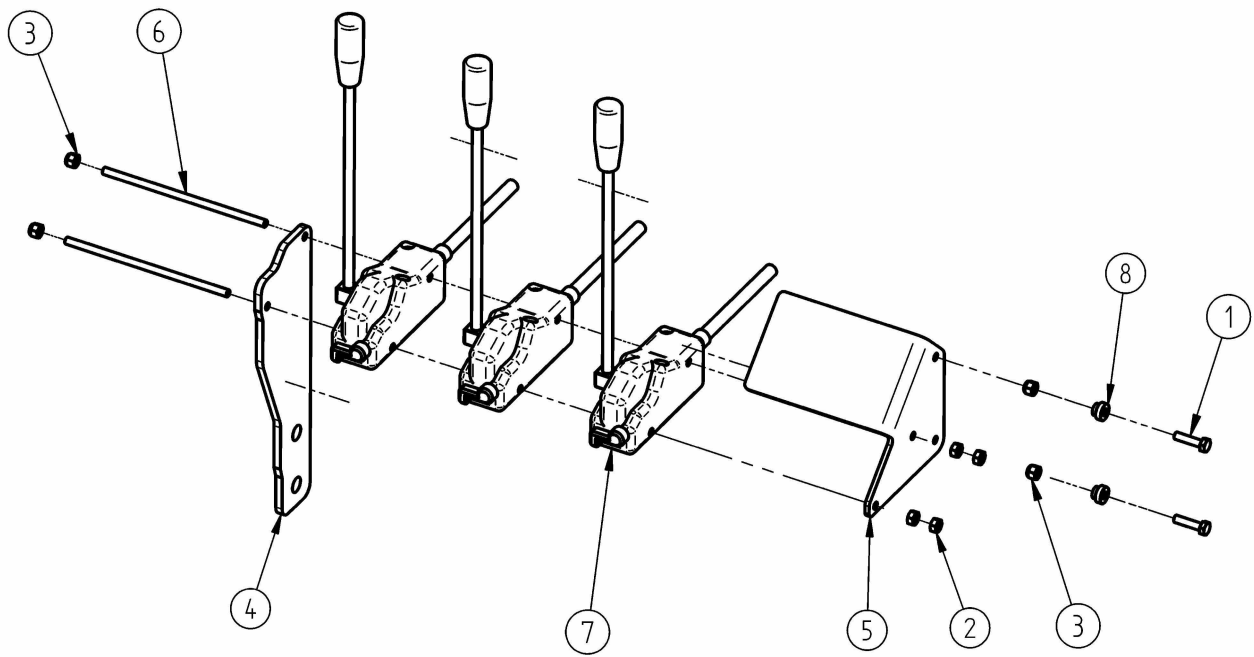
TAV. 4

Pos.	Code	Q.ty	Description
1	600.202	1	SCREW M6x25 8.8 ISO 4017 ZB
2	610.723	1	SCREW M8x40 8.8 ISO 4014 ZB
3	630.008	1	SCREW M8x40 8.8 ISO 4017 ZB
4	610.843	1	SCREW M10x16 8.8 ISO 4017 ZB
5	600.227	2	SCREW M10x20 8.8 ISO 4017 ZB
6	600.641	2	SCREW M10x35 8.8 ISO 4017 ZB
7	600.404	1	SCREW M10x50 8.8 ISO 4014 ZB
8	630.013	1	SCREW M10x55 8.8 ISO 4017 ZB
9	600.037	1	NUT M8 6S ISO 4032 ZB
10	600.010	5	NUT M10 6S ISO 4032 ZB
11	600.554	4	SELF LOCKING NUT M10 UNI 7473 ZB
12	610.454	1	SELF LOCKING NUT M8 UNI 7473 ZB
13	630.021	1	SELF LOCKING NUT M6 UNI 7473 ZB
14	600.322	4	FLAT WASHER M10 ISO 7089 ZB
15	630.028	2	ELASTIC CONIC WASHER 10.2x20x2.7 ZB
16	600.885	4	INNER SEEGER D42 UNI7437
17	610.833	4	OUTER SEEGER D50 UNI7435
18	240.004	1	PINION TIGHTENING CHAIN 1/2"x5/16" Z18
19	240.005	1	CHAIN 1/2"x5/16" PITCHES 58 CLOSED
20	600.872	4	BEARING 6004-2RS
21	240.010	1	TRACTION SPRING 1.2x10x47
22	240.255	1	CYLINDRIC HANDLE MCS 28x85
23	630.056	1	HAND-WHEELS AT LOBES WITH BLIND HOLE M10
24	240.022	1	WELDED ROLLS SUPPORT
25	240.023	1	PRESS BUSHING FOR LOCK
26	240.024	1	LOCK WHEEL
27	240.025	1	GEARS CARTER STRETCHER FILM
28	240.031	1	PIN D16
29	240.033	1	ROUND D10 DRIVING FILM
30	240.043	1	PIN D10-14
31	240.132	1	PINION 1/2" 5/16" Z11 DIN 8187
32	240.135	1	PINION 1/2"x5/16" Z20 DIN 8187
33	240.136	2	SPACER OVER THE ROLLS
34	240.137	4	BUSHING ROLLS SUPPORT
35	240.138	2	FILM ROLL

TAV. 5

Pos.	Code	Q.ty	Description
1	630.105	1	SCREW M6x50 8.8 ISO 4017 ZB
2	630.005	1	SCREW M8x55 8.8 ISO 4014 ZB
3	600.702	2	SCREW M8x25 8.8 ISO 4017 ZB
4	630.008	1	SCREW M8x40 8.8 ISO 4017 ZB
5	630.009	2	SCREW M8x30 8.8 ISO 4014 ZB
6	600.770	2	SCREW M12x20 8.8 ISO 4017 ZB
7	600.616	4	SCREW M12x35 8.8 ISO 4017 ZB
8	600.366	4	SELF LOCKING NUT M12 UNI 7473 ZB
9	610.454	6	SELF LOCKING NUT M8 UNI 7473 ZB
10	630.021	2	SELF LOCKING NUT M6 UNI 7473 ZB
11	630.024	1	WASHER M8 9x32x2.5 ZB
12	600.089	8	FLAT WASHER M12 ISO 7089 ZB
13	240.206	1	SPRING LOCK HOOKS D3 L56
14	240.228	1	TRACTION SPRING 1.5x15x73
15	240.255	1	CYLINDRIC HANDLE MCS 28x85
16	240.606	1	LEVER LIFTING STRETCHER FILM
17	240.607	1	CONNECTING ROD FOR LIFTING STRETCHER FILM
18	240.028	4	PIN D16-24
19	240.608	1	LOCK FOR LIFTING
20	240.032	1	PIN D10 L=20
21	240.611	1	ADAPTER FOR REEL H500
22	630.060	2	RUBBER PLUG D59
23	240.617	1	STRETCHER FILM SUPPORT 3100 S
24	240.618	1	DISTRIBUTOR SUPPORT

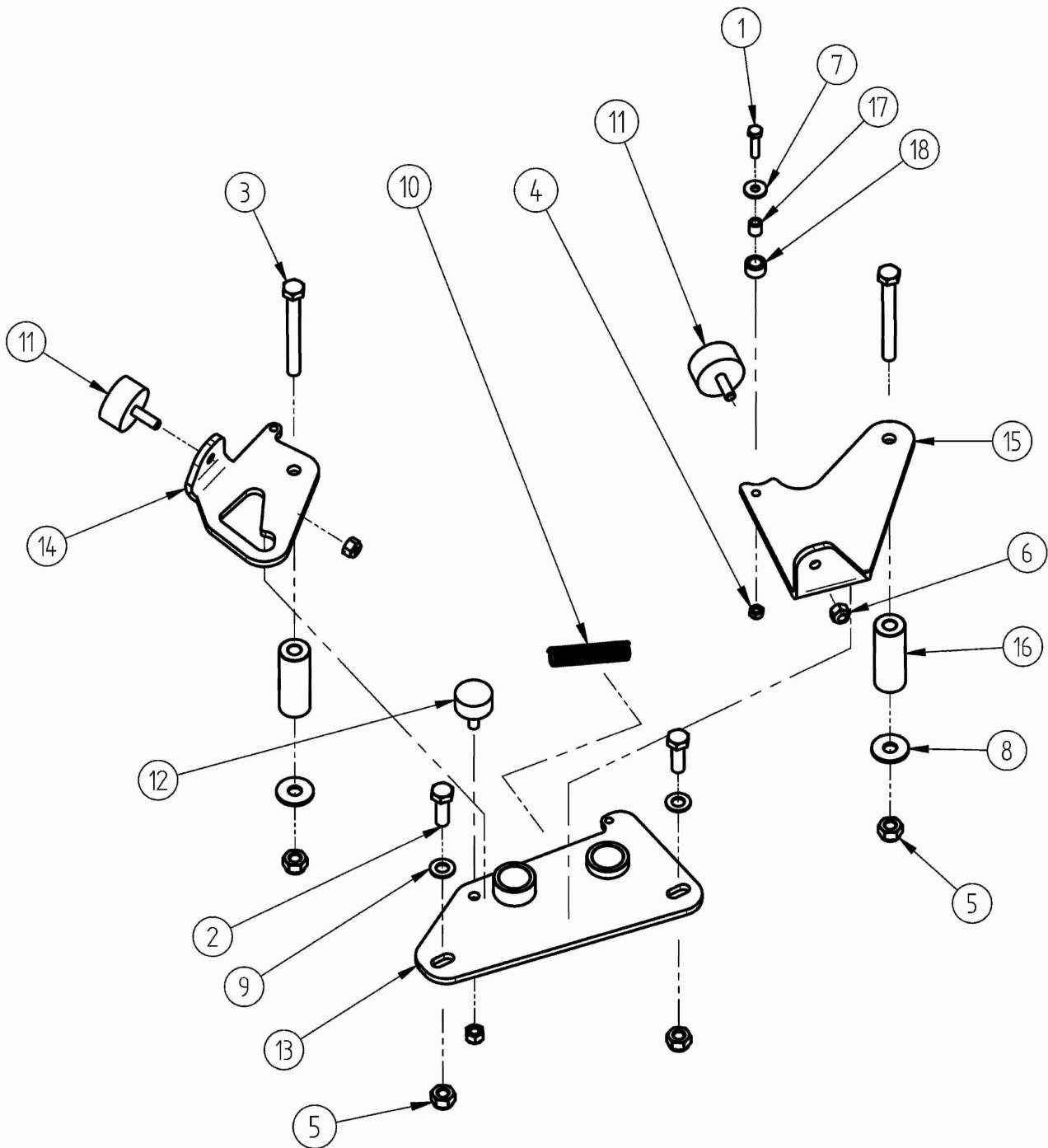
TAV. 6



TAV. 6

Pos.	Code	Q.ty	Description
1	600.202	2	SCREW M6x25 8.8 ISO 4017 ZB
2	600.532	4	NUT M6 6S ISO 4032 ZB
3	630.021	4	SELF LOCKING NUT M6 UNI 7473 ZB
4	240.036	1	CONTROLS SUPPORT
5	240.037	1	SUPPORT CONTROLS LABELS
6	240.038	2	TIE-ROD M6x150
7	240.039	3	KIT DISTRIBUTOR CONTROL L=3000
	240.040		CABLE L=3000
	240.042		CABLE L=4500
8	240.043	2	PIN D10-14

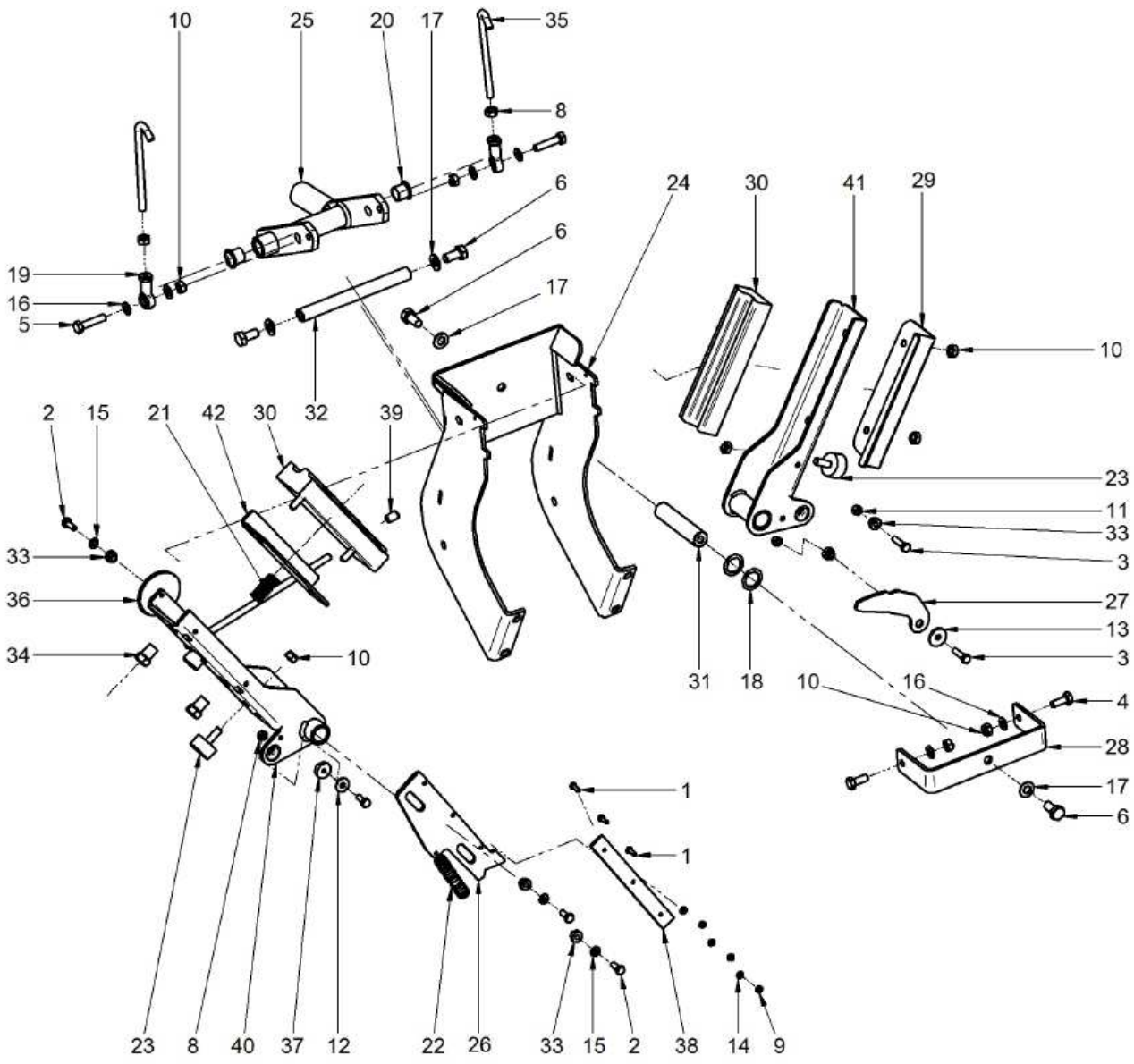
TAV. 7



TAV. 7

Pos.	Code	Q.ty	Description
1	600.202	1	SCREW M6x25 8.8 ISO 4017 ZB
2	600.148	2	SCREW M10x30 8.8 ISO 4017 ZB
3	600.356	2	SCREW M10x90 8.8 ISO 4014 ZB
4	600.198	1	SELF LOCKING NUT M6 UNI 7474 ZB
5	600.554	4	SELF LOCKING NUT M10 UNI 7473 ZB
6	610.454	3	SELF LOCKING NUT M8 UNI 7473 ZB
7	600.412	1	WASHER M6 6.6x18x2 ZB
8	620.250	2	WASHER M10 11x30x2.5 ZB
9	600.322	2	FLAT WASHER M10 ISO 7089 ZB
10	240.228	1	TRACTION SPRING 1.5x15x73
11	630.057	2	ANTIVIBRATING D40 H20 M8
12	630.241	1	ANTIVIBRATING D30 H15 M8
13	240.700	1	REARMEMENT SUPPORT
14	240.701	1	MAIN STIRRUP REARMEMENT
15	240.702	1	AUXILIARY STIRRUP REARMEMENT
16	240.703	2	PIN D25
17	240.044	1	BUSHING D6-10
18	240.045	1	BUSHING D10-16

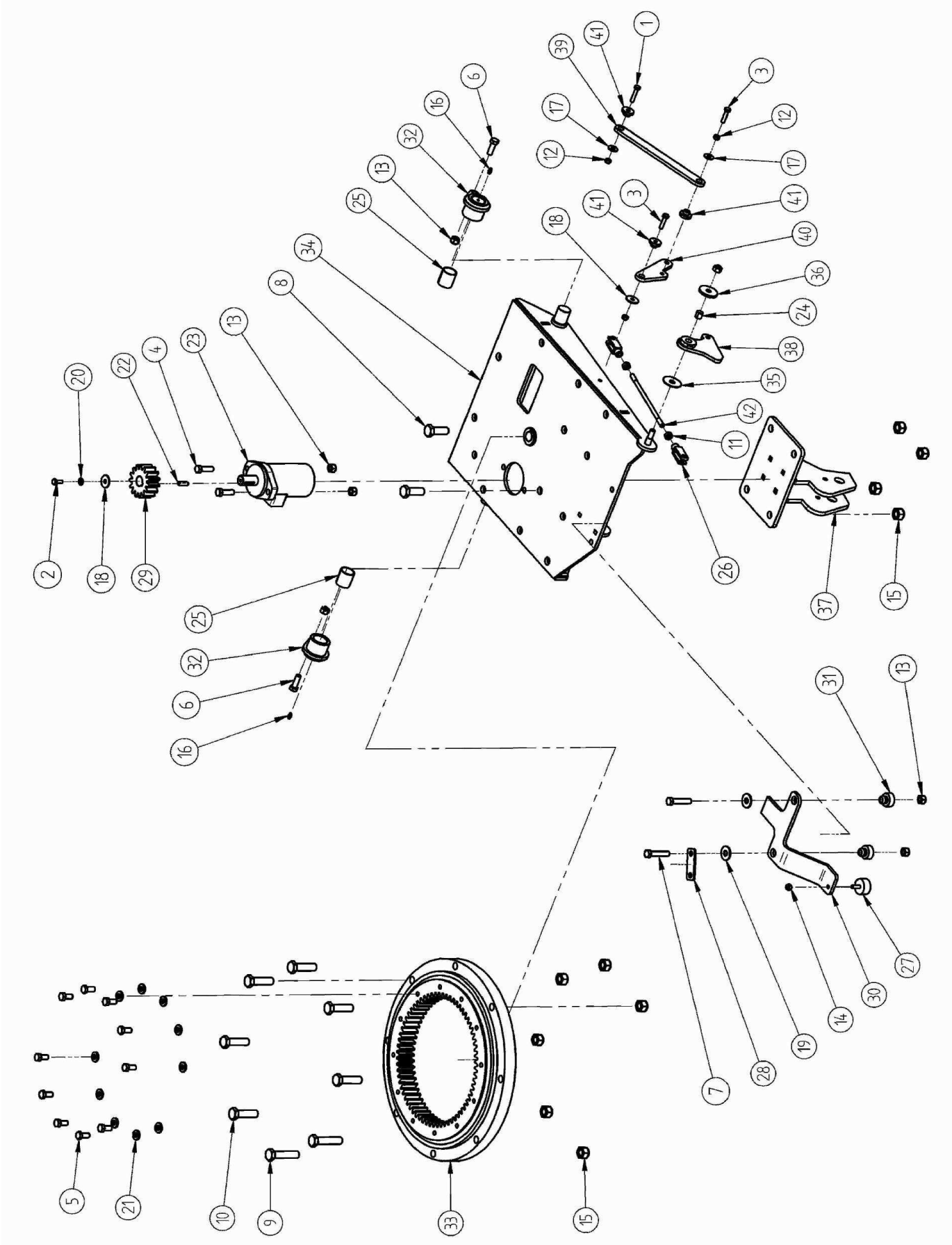
TAV. 8



TAV. 8

Pos.	Code	Q.ty	Description
1	630.100	3	SCREW M4x12 8.8 ISO 4017 ZB
2	630.104	4	SCREW M6x16 8.8 ISO 4017 ZB
3	600.202	2	SCREW M6x25 8.8 ISO 4017 ZB
4	600.223	2	SCREW M8x20 8.8 ISO 4017 ZB
5	600.850	2	SCREW M8x35 8.8 ISO 4017 ZB
6	600.227	4	SCREW M10x20 8.8 ISO 4017 ZB
7	600.532	1	NUT M6 6S ISO 4032 ZB
8	600.037	2	NUT M8 6S ISO 4032 ZB
9	630.144	3	SELF LOCKING NUT M4 UNI 7474 ZB
10	600.652	8	SELF LOCKING NUT M8 UNI 7474 ZB
11	630.021	2	SELF LOCKING NUT M6 UNI 7473 ZB
12	600.412	1	WASHER M6 6.6x18x2 ZB
13	630.156	1	WASHER M6 6.6x24x2 ZB
14	630.157	3	FLAT WASHER M4 ISO 7089 ZB
15	600.514	3	FLAT WASHER M6 ISO 7089 ZB
16	600.115	6	FLAT WASHER M8 ISO 7089 ZB
17	600.322	4	FLAT WASHER M10 ISO 7089 ZB
18	630.203	2	RING TYPE "PS" 20x28x1 DIN988
19	240.006	2	FEMALE JOINT M8
20	240.008	2	COUPLING FLANGE BUSHING 1615-24T
21	240.257	1	COMPRESSION SPRING 1x15x24
22	240.228	1	TRACTION SPRING 1.5x15x73
23	630.241	2	ANTIVIBRATING D30 H15 M8
24	240.678	1	PLIERS SUPPORT
25	240.679	1	SETTING PLIERS
26	240.684	1	SLIDING BLADE HOLDER
27	240.685	1	LIFTING STAFF
28	240.686	1	FIXING PROFILE
29	240.687	1	PLIERS CONVEYOR
30	240.801	2	RUBBER FOR PLIERS
31	240.689	1	PIN D20 L=92
32	240.690	1	PIN D16 L=158
33	240.043	5	PIN D10-14
34	240.691	2	SLIDING PIN FOR RUBBER
35	240.692	2	SETTING STAFF M8
36	240.693	1	DISC SLIDING FILM
37	240.694	1	RUBBER WASHER
38	240.695	1	BLADE L180
39	630.064	1	RUBBER PLUG
40	240.696	1	OUTER BOX
41	240.697	1	INNER BOX
42	240.698	1	BOX FOR RUBBER

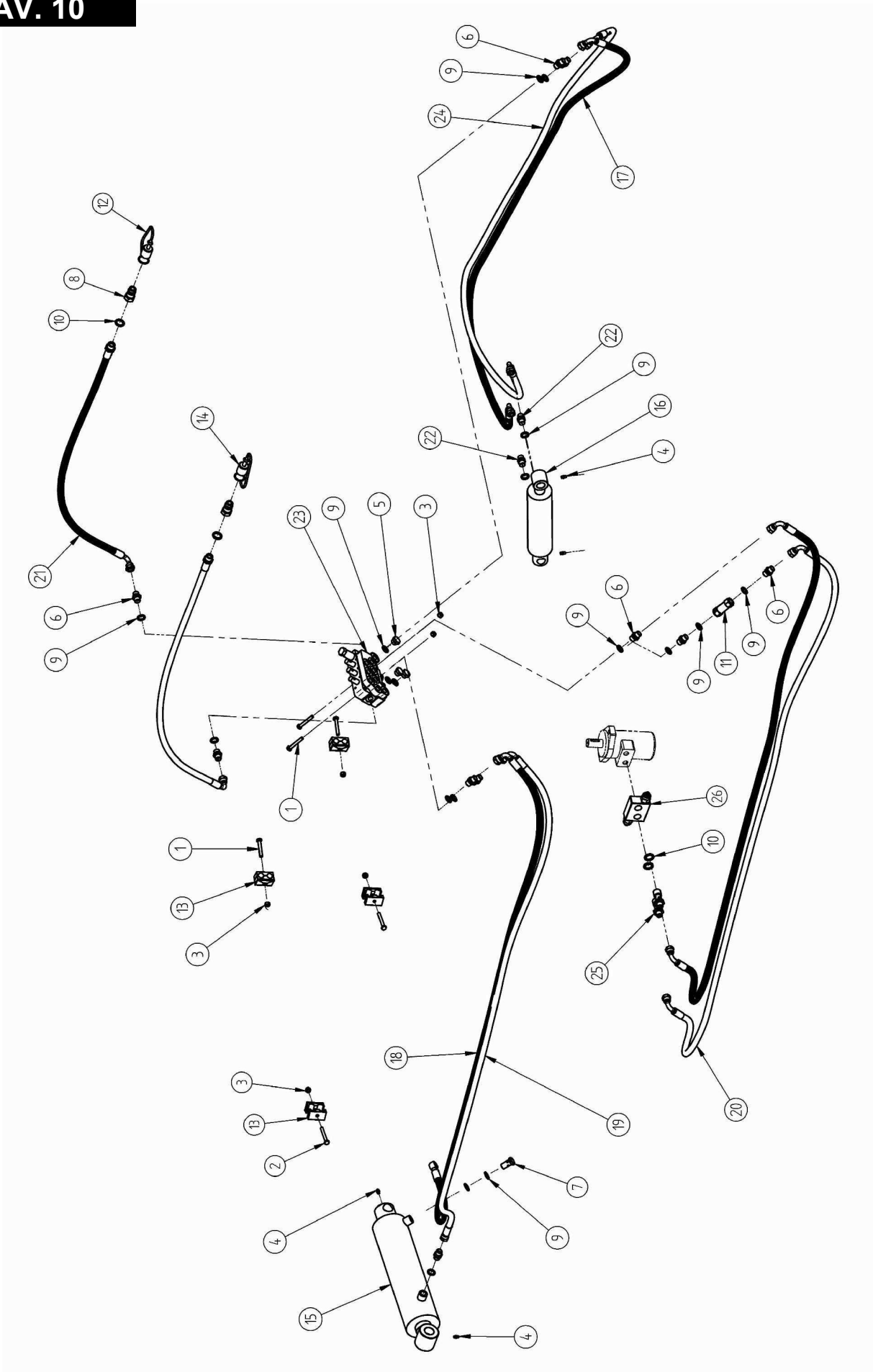
TAV. 9



TAV. 9

Pos.	Code	Q.ty	Description
1	610.723	1	SCREW M8x40 8.8 ISO 4014 ZB
2	600.223	1	SCREW M8x20 8.8 ISO 4017 ZB
3	600.850	2	SCREW M8x35 8.8 ISO 4017 ZB
4	630.015	2	SCREW M12x40 8.8 ISO 4014 ZB
5	600.441	10	SCREW M12x25 8.8 ISO 4017 ZB
6	600.616	2	SCREW M12x35 8.8 ISO 4017 ZB
7	630.113	2	SCREW M12x60 8.8 ISO 4014 ZB
8	600.578	2	SCREW M18x50 8.8 ISO 4017 ZB
9	600.238	2	SCREW M18x80 8.8 ISO 4014 ZB
10	630.122	6	SCREW M18x65 8.8 ISO 4017 ZB
11	600.010	2	NUT M10 6S ISO 4032 ZB
12	600.652	3	SELF LOCKING NUT M8 UNI 7474 ZB
13	600.366	7	SELF LOCKING NUT M12 UNI 7473 ZB
14	610.454	1	SELF LOCKING NUT M8 UNI 7473 ZB
15	600.263	10	SELF LOCKING NUT M18 UNI 7473 ZB
16	600.124	2	STRAIGHT GREASER M6x1
17	610.185	2	WASHER M8 9x24x2 ZB
18	630.024	2	WASHER M8 9x32x2.5 ZB
19	630.158	2	WASHER M12 14x36x3 ZB
20	630.164	1	ELASTIC CONIC WASHER 8.2x18x1 ZB
21	630.165	10	ELASTIC CONIC WASHER 12.2x25x3.4 ZB
22	600.559	1	SPLINE 8x7x30 6604/A
23	640.080	1	ENGINE BG160 N C25
24	240.222	1	SELF GREASING BUSHING RL1415
25	240.223	2	SELF GREASING BUSHING CB85 3240
26	630.237	2	FORK M10x40 UNI1676 C/CLIPS
27	630.057	1	ANTIVIBRATING D40 H20 M8
28	240.575	1	INDUCTIVE SENSOR SUPPORT
29	240.619	1	SETTING PINION FIFTH WHEEL
30	240.656	1	SELF CENTRING PLATE
31	240.657	2	SUPPORT SELF CENTRING
32	240.658	2	SUPPORT BOWL
33	240.663	1	FIFTH WHEEL Z67 M5
34	240.664	1	FIFTH WHEEL SUPPORT
35	240.666	1	SUPPORT WASHER
36	240.667	1	WASHER 12x48 s=5
37	240.668	1	CYLINDER SUPPORT
38	240.671	1	CAM
39	240.672	1	CONNECTING ROD AT CAM
40	240.673	1	RETURNING SETTING AT CAM
41	240.674	3	PIN D16-30 S=8
42	240.675	1	SETTING STAFF M10

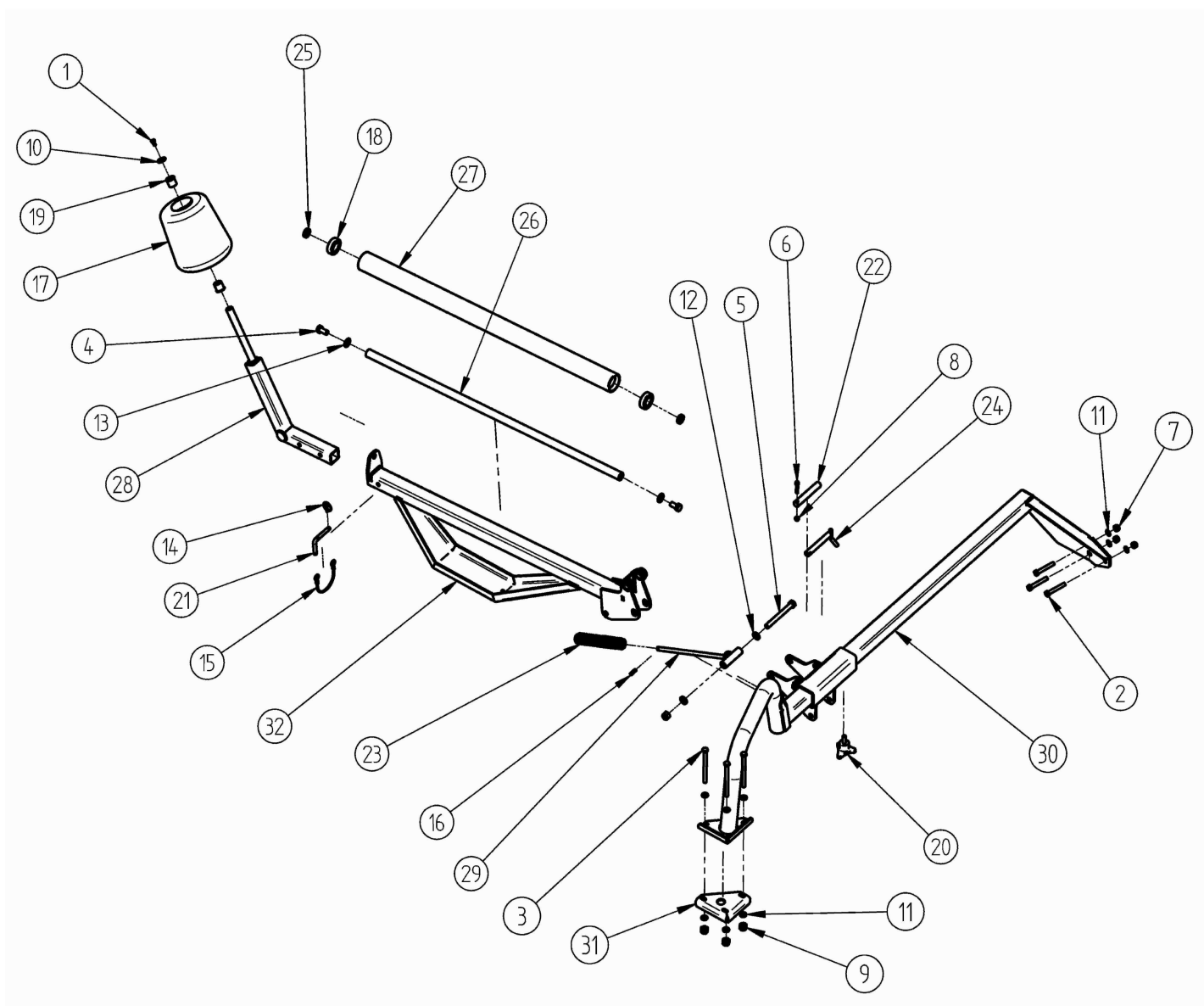
TAV. 10



TAV. 10

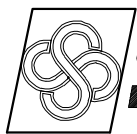
Pos.	Code	Q.ty	Description
1	630.005	4	SCREW M8x55 8.8 ISO 4014 ZB
2	630.108	2	SCREW M8x70 8.8 ISO 4014 ZB
3	610.454	6	SELF LOCKING NUT M8 UNI 7473 ZB
4	600.124	4	STRAIGHT GREASER M6x1
5	630.044	3	PLUG M 3/8" ZN
6	600.270	10	NIPPLE 3/8" ZN
7	630.047	1	PIERCED SCREW 3/8"
8	600.273	2	MALE FAST CLUTCH 1/2"
9	620.452	18	WASHER BONDED 3/8"
10	630.048	4	WASHER BONDED 1/2"
11	630.049	1	ONE-WAY VALVE 3/8" HOLE D=0.8
12	630.053	1	PLASTIC PLUG FOR FAST CLUTCH 1/2" M
13	630.054	4	COMPLETE COLLAR FOR PIPE OF 3/8"
14	630.055	1	YELLWO PLASTIC PLUG FOR CLUTCH 1/2" M
15	240.627	1	CYLINDER FORK LIFTING 3100 S
16	240.628	1	CYLINDER LIFTING CRADLE 3100 S
17	240.629	1	POSITIVE CRADLE PLUG 3100 S
18	240.630	1	POSITIVE FORK PIPE 3100 S
19	240.631	1	NEGATIVE PIPE FORK 3100 S
20	240.632	2	ROTATING PIPE 3100 S
21	240.633	2	FEEDING PIPE 3100 S
22	240.634	2	NIPPLE 3/8" GAUGED D=1.5
23	630.061	1	MONOBODY DISTRIBUTOR 3/8" WITH 3 EXITES
24	240.635	1	NEGATIVE PIPE CRADLE 3100 S
25	630.062	2	COLUMN HYDRAULIC ENGINE
26	630.063	1	VALVE HYDRAULIC ENGINE VAF 08-D 90BAR

TAV. 11



TAV. 11

Pos.	Code	Q.ty	Description
1	600.061	1	SCREW M8x16 8.8 ISO 4017 ZB
2	630.115	3	SCREW M12x80 8.8 ISO 4014 ZB
3	630.116	3	SCREW M12x160 8.8 ISO 4014 ZB
4	630.120	2	SCREW M16x30 8.8 ISO 4017 ZB
5	630.121	1	SCREW M16x150 8.8 ISO 4014 ZB
6	630.130	1	SCREW M8x45 8.8 ISO 5931 ZB
7	600.366	3	SELF LOCKING NUT M12 UNI 7473 ZB
8	610.454	1	SELF LOCKING NUT M8 UNI 7473 ZB
9	600.197	4	SELF LOCKING NUT M16 UNI 7473 ZB
10	630.024	1	WASHER M8 9x32x2.5 ZB
11	600.089	9	FLAT WASHER M12 ISO 7089 ZB
12	600.031	2	FLAT WASHER M16 ISO 7089 ZB
13	630.166	2	ELASTIC CONIC WASHER 16.5x34x3.8 ZB
14	600.723	1	PLUG AT CLUTCH D4.5
15	240.207	1	RUBBER TIE-ROD WITH HOOKS L=240
16	630.174	1	ELASTIC PLUG SPIRAL 8x30 ISO 8750 NE
17	240.002	1	PLASTIC ROLL FOR BALE WRAPPER
18	240.217	2	BEARING 6206-2RS1
19	240.007	2	BUSHING TECNOPLAST TC01040
20	630.239	1	HAND-WHEEL 3 POINTS M12x32
21	240.258	1	PLUG AT L D12 L=84
22	240.709	1	PLUG D22 L140
23	240.710	1	COMPRESSION SPRING 8x40x230
24	240.711	1	PLUG D19 L=124
25	240.712	2	SPACER
26	240.713	1	SHAFT ROLL
27	240.714	1	PLATFORM BALANCE ROLL
28	240.715	1	AERIAL SUPPORT
29	240.716	1	SPRING SUPPORT ZB
30	240.717	1	FRAME PLATFORM BALANCE SUPPORT
31	240.718	1	STIRRUP FIXING ARC
32	240.719	1	ROLL SUPPORT



AGRICULTURAL MACHINERY
sitrex® SpA

Zona Industriale-Viale Grecia, 8
06018 TRESTINA-(Perugia)-ITALY
Tel. +39.075.8540021-Telefax +39.075.8540523
e-mail: sitrex@sitrex.it www.sitrex.com

